

# Getting Started with the *groov* Free Trial

Here's how to quickly get started with the free trial of *groov*, Opto 22's easy-to-use tool for building and viewing mobile operator interfaces so you can monitor and control systems and equipment.

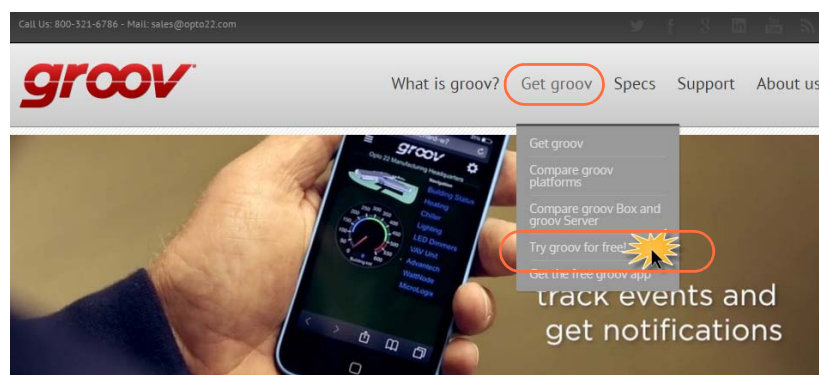
It's a simple 5-step (or less!) process:

1. Register for the free trial and download *groov*.
2. Install *groov* and set up a user account.
3. (Optional) Install and configure the KEPServerEX free trial.
4. Configure the tag server in *groov*.
5. Build your interface in *groov*, and then view it on your mobile device.

Let's get started.

## Step 1. Register and download *groov*

1. Open your favorite browser (we recommend Chrome) and go to [groov.com](http://groov.com).



*groov*: Build and use mobile apps for automation  
It's your system on your mobile!

2. Click Get groov > Try groov for free!

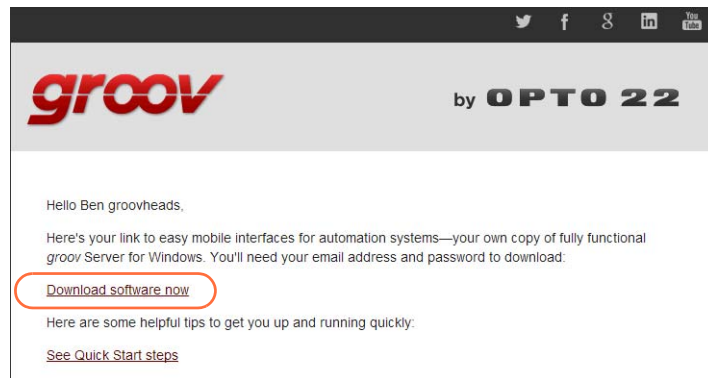
- If you have a My.Opto22 account, use your My.Opto22 password.
- If you don't have a free My.Opto22 account, no problem. Enter your email address above to create an account.

3. Enter your email address and click Send; then complete the form and click Send. (If you already have a MyOpto22 account, you'll just be asked for your password.)

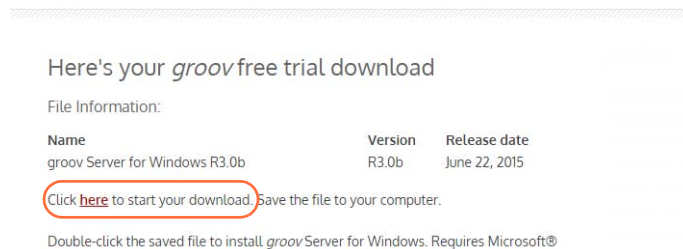
Make sure you **remember your password**; you'll need it to download *groov*.

4. Check your inbox. We've just sent instructions for your next step. If you don't see the email in your inbox, check your spam folder.

*Quick tip:* Don't delete this email. There are several helpful links in here that we'll come back to.



5. Now click the Download link in the email and log back in.



6. Click "here" to start the *groov* Trial download.

## Step 2. Install *groov*

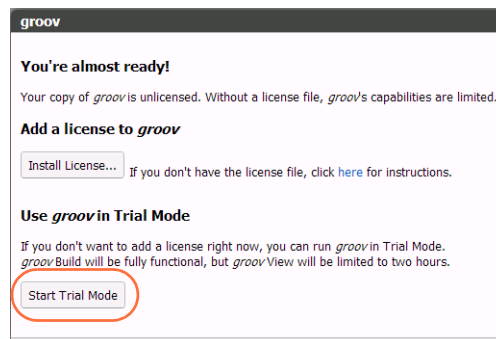
1. Once the download is complete, double-click it to install *groov*.



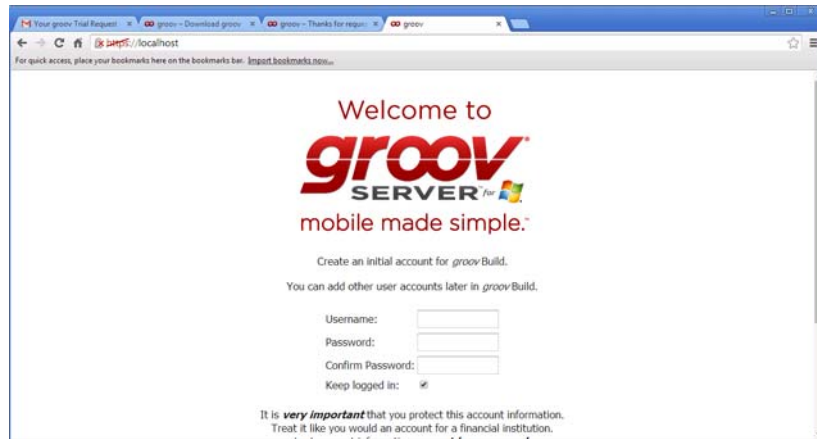
2. Accept the defaults during installation.
3. When installation is complete, go back to your browser and enter this address:  
`https://localhost`

This address takes you to the new *groov* Server for Windows you just installed. Don't forget the "s" in https.

4. Accept all security warnings.



5. Click Start Trial Mode.



6. Create a *groov* admin user account.

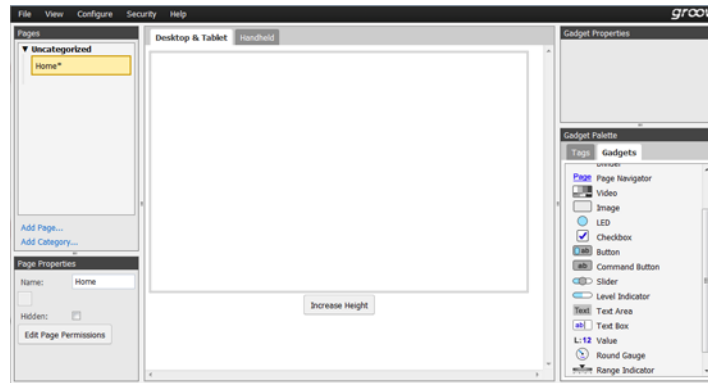
**IMPORTANT:** Remember your username and password! There is no way to recover them should you forget.



7. Click Go to *groov* Build! Keep this tab open.

## Step 3. Evaluate *groov*

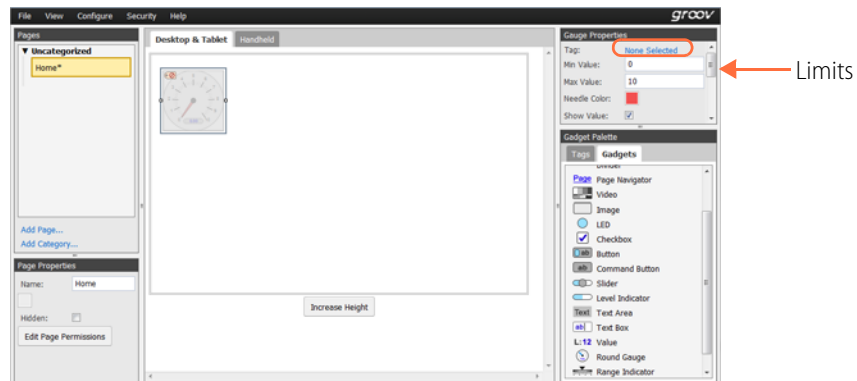
1. Go back to *groov* in your browser now. Click the gear icon (upper right) and choose Switch to *groov* Build.



2. From the Configure menu, choose Devices and Tags. Click Add New Device and choose Data Simulator from the dropdown menu.  
With the Data Simulator you can try groov without connecting to any real hardware.
3. Click Add page (in the left-hand column) and give the page a name.  
We'll start by adding a round gauge.
4. Click the Gadgets tab (lower right).



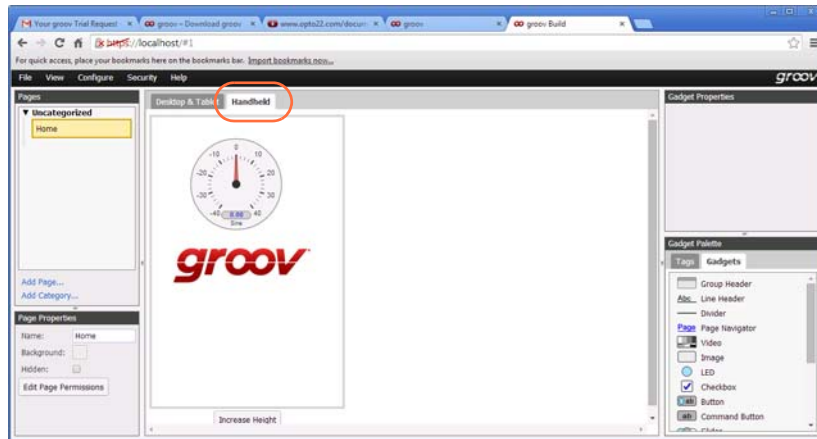
5. Drag the Round Gauge gadget onto the page.



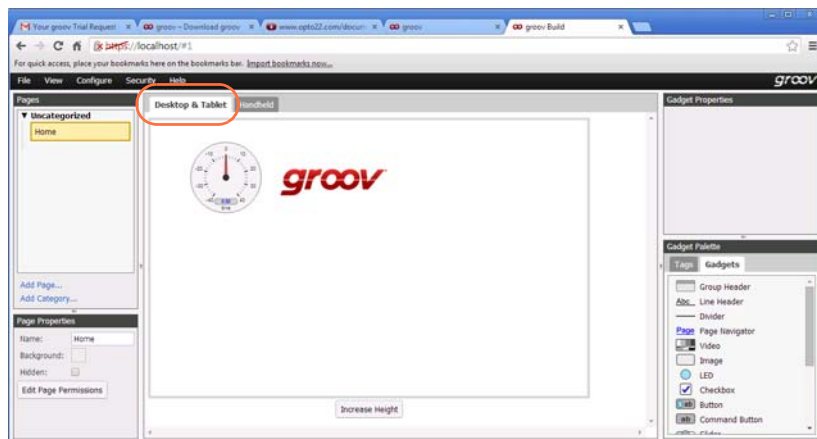
6. Click "None Selected" in the upper right and choose a tag. Open the tag server tree to see them all.
7. Set up limits for the tag (also upper right).
8. Play around and add some other gadgets, like the Image one. Just select an image on your hard drive. In this example we added the *groov* logo.
9. Choose File > Save All Changes and Switch to *groov* View.  
There's your interface. Pretty cool!



10. Click the gear icon in the upper right and choose Switch to *groov* Build.
11. Click the Handheld tab and notice that *groov* is also building the handheld pages at the same time. You can rearrange the gadgets so they'll look right on a smartphone.



12. When you click back to the Desktop & Tablet tab, note that everything there stays where it was.



13. Save and switch to groov View again.
14. Now get out your smartphone and see how it looks. Open a browser and type in your PC name for the URL, for example: `https://benspc` Log in, and there you are.

You've just built a mobile application!

For more about *groov*, check out [groov.com](http://groov.com). For specifics on using gadgets and your new interface, see the [groov User's Guide](#).



## For Help

If you have problems getting started with the *groov* free trial, and you can't find the solution in this tech note or the [KEP ServerEX Settings for groov Technical Note](#), give us a call. Product Support for *groov*, like all our products, is free.

<b>Phone:</b>	800-TEK-OPTO (800-835-6786) 951-695-3080 (Hours are Monday through Friday, 7 a.m. to 5 p.m. Pacific Time)	<i>NOTE: Email messages and phone calls to Opto 22 Product Support are grouped together and answered in the order received.</i>
<b>Fax:</b>	951-695-3017	
<b>Email:</b>	support@opto22.com	
<b>Opto 22 website:</b>	www.opto22.com	