



## Quick Start for GROOV-AR1

Watch the *groov* Quick Start video  
<http://op22.co/groov-quick-start>

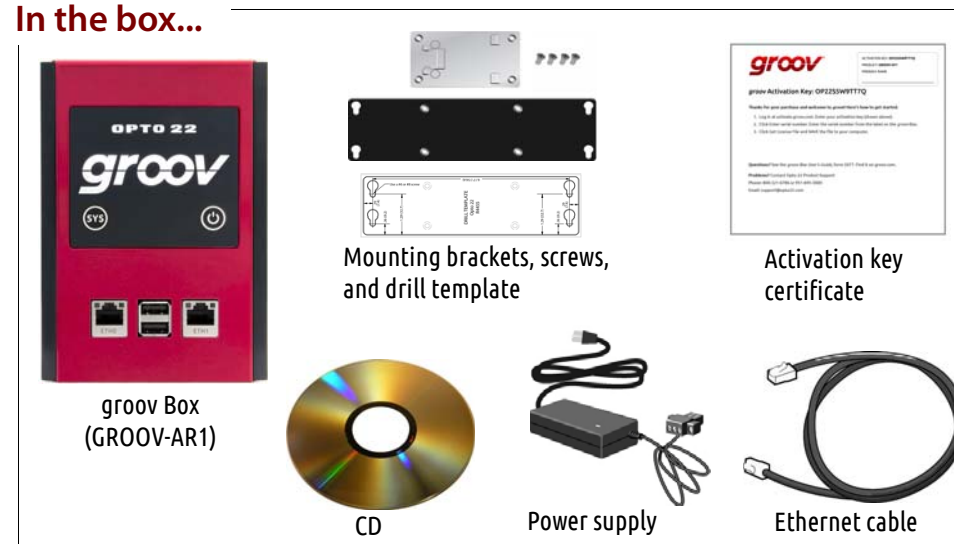
Open →

# 1 Unpack the *groov* Box

## You need:

- A computer with a web browser on the same network you'll use for the *groov* Box. We recommend Chrome, Firefox, or Internet Explorer 10 or newer. The network should have DHCP and DNS.
- One of the following on the same network as your computer: a Modbus/TCP-compatible PLC, sensor, meter, or other device; an OPC UA-compatible server communicating with your automation system or equipment; or an Opto 22 SNAP PAC controller running a PAC Control strategy (firmware R9.2a or newer)

## In the box...



# 2 Get started

To set up the *groov* Box, you'll use the *groov* Box components shown below.

When deciding where to place the *groov* Box, make sure there is room around the front, top, and sides of the *groov* Box to allow air to flow freely around the device. You need to be able to see the information on the bottom.

You'll need the activation key for step 6 when you activate your *groov* Box, so make sure to put your activation key certificate in a safe place.



# 3 Connect to the network

Connect ETH0 to your computer's network.

If you have a separate control network, see form 2104, the *groov* Box User's Guide, on the CD.

For detailed information on setting up your network and communications over the Internet, see form 2161, the *Guide to Networking groov*.



# 4 Connect the power supply

Plug the small connector on the power supply into the power terminal on the bottom of the *groov* Box, and tighten the screws. Plug the other end into a standard 120 or 240 VAC outlet.

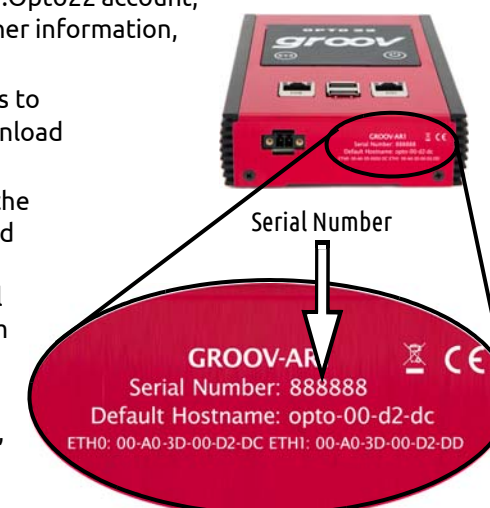


# 5 Turn on the *groov* Box

Firmly press the On/Off button until the SYS LED lights up (in about one second), then release. Take a look at the LNK ACT light for ETH0; if the cable is properly connected, the LNK ACT light should be on or blinking. (See the illustration in step 3.)

# 6 Activate the *groov* Box and get the license file

- Open a web browser and go to [activate.groov.com](http://activate.groov.com).
- Log in using your email address and your My.Opto22 password. You may have set up your free My.Opto22 account when you purchased your *groov* Box. If you don't have a My.Opto22 account, enter your email address and other information, and the account will be created.
- Follow the on-screen instructions to activate your *groov* Box and download the license file. The activation key is printed on the activation key certificate included with the *groov* Box. When asked to enter the serial number, you'll find it on the label on the bottom of the device.
- After activating the *groov* Box and downloading the license file, return to this Quick Start and continue with step 7.



## 7 Open *groov*

- Make sure the SYS LED has stopped blinking.
- In your browser, enter `https://` and your *groov* Box's hostname as the URL. For example, if the hostname is `opto-00-d2-dc`, you type `https://opto-00-d2-dc`
- Accept the security warning.

*NOTE: If the security warning does not appear, your network configuration is probably unique. Please see the *groov* Box User's Guide.*

**For Chrome:** Click "Proceed anyway."

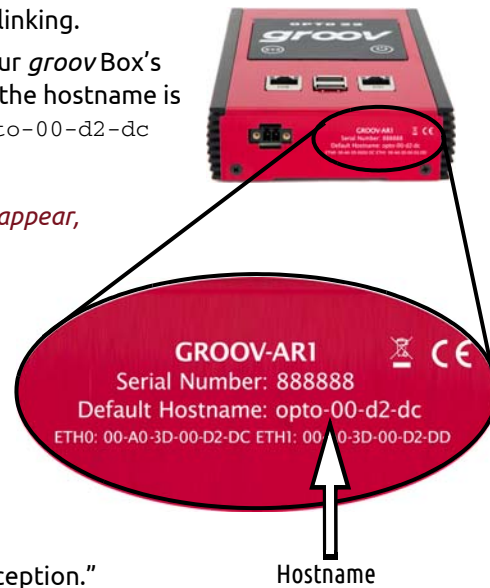
**For Firefox:**

- Expand "I Understand the Risks."
- Click Add Exception to open the Add Security Exception dialog box.
- Select "Permanently store this exception."
- Click Confirm Security Exception.

**For Internet Explorer:** Click "Continue to this website (not recommended)."

The **Welcome to *groov*** window opens in your web browser.

- Click Next.



## 8 Create a *groov* Admin account and install your license

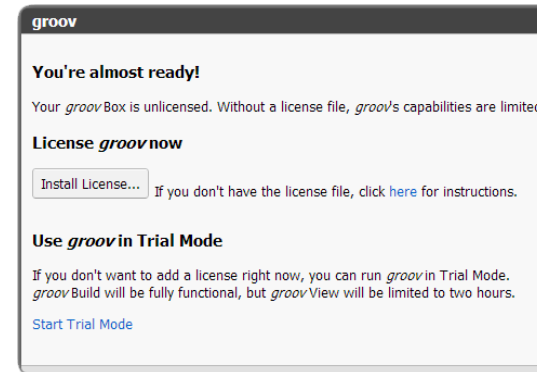
Follow the on-screen instructions to create a username and password for *groov* Admin. The Admin account is for administrative tasks such as changing or editing the network connections and updating the *groov* Box.

**CAUTION:** Write down your Username and Password, and keep them in a safe place. You will need this information each time you log in. If you lose your login information, you will have to reset the *groov* Box to factory defaults, which will erase your project. There is no password recovery option.

Make sure to install your license file. Without an installed license, *groov* will only work for two hours.

- When prompted, click Install License.
- Browse to the license file, then click Open.

Your license is now installed.



## 9 Create a *groov* Build account

A Build account lets you create and edit a project in *groov* Build.

- When prompted, enter a new username and password. Enter the password again to confirm.
  - Click Create *groov* Build Account.
  - Click Go to *groov* Build. *groov* Build opens in your browser.
- If you have any trouble opening *groov*, see Troubleshooting in [Form 2027](#), the *groov* User's Guide.



That's it! You're finished with initial setup and ready to create your *groov* project.

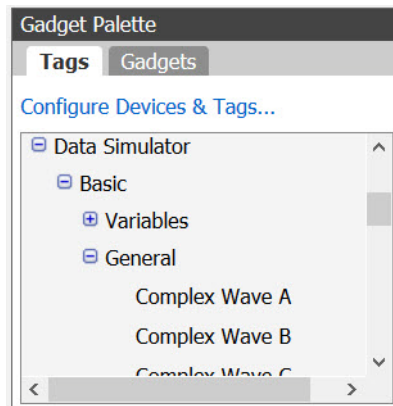
Go to *groov* Build!

## 10 Get a tag database

You can add a tag database from an Opto 22 controller, an OPC UA-compatible server, or a Modbus/TCP slave device. For more information, see [Form 2027](#), the *groov* User's Guide.

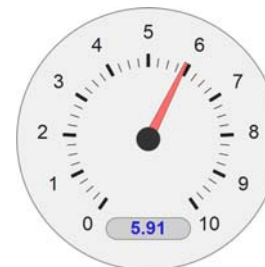
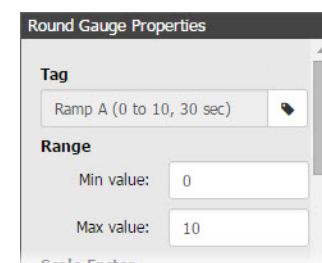
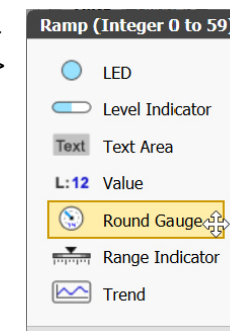
For this demonstration we'll use tags from *groov*'s built-in Data Simulator.

- In Build, choose Configure > Devices and Tags.
- Click Add New Device and choose Data Simulator.
- Close the Configure Devices and Tags dialog box and notice that the Data Simulator tags are available in the Gadget Palette.



## 11 Build your operator interface

- On the left side under Pages, click Add Page.
- Type a new name for the page, then click OK.
- With the Tags tab selected in the Gadget Palette (lower-right corner), expand the list of tags for Data Simulator > Basic > General.
- Choose Ramp A (0 to 10, 30 sec).
- Double-click Round Gauge in the pop-up menu.
- Select the Gauge. In Gauge Properties (upper right), enter 0 as the Min Value and 10 as the Max Value.

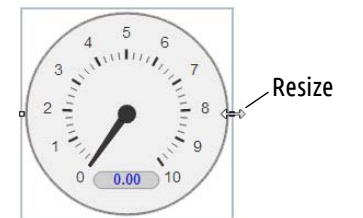


- Select File > Save All Changes and Switch to *groov* View.

You should now see the Round Gauge running in View. The needle shows the tag's current value.

## 12 Adjust the handheld layout

- Click the gear symbol in the upper-right corner of View, and select Switch to *groov* Build.
- Click the Handheld tab, and then resize the gadget.
- Switch back to the Desktop & Tablet layout and notice that the gadget maintains its original size in that view.



**View your project on a mobile device:**

- Make sure the mobile device is on the same network as your *groov* Box.
  - Open a browser on the mobile device and enter `https://` and your *groov* Box's hostname as the URL, just as you did on your computer in step 7.
  - Accept the security warning.
- You'll see the work you just created on your smartphone or tablet. Now you're *groovin*!

**Back up your project:** As you work on your project, make sure to back up frequently in *groov* Build. For more information, see the *groov* User's Guide.

**To get updates at any time:** Go to [manage.groov.com](https://manage.groov.com). For update instructions, see the *groov* Box User's Guide on the *groov* Box CD.