

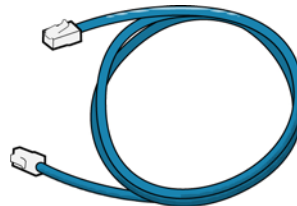


OptoEMU Sensor™ DR Quick Start

OPTO 22

In the box...

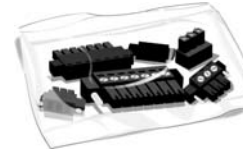
OptoEMU Sensor DR



Ethernet cable



CD



Package of black connectors



OptoEMU Sensor User's Guide

1 Install and wire

Follow instructions in the *OptoEMU Sensor User's Guide* to:

- Install the Sensor.
- Wire the Sensor to pulsing meters and Modbus devices (serial and Ethernet).
- Wire relay outputs to building or control systems (optional).
- Connect the Sensor to a power source but wait to apply power.

2 Assign IP address

For details, see the *OptoEMU Sensor User's Guide*.

1. Get IP address information from your IT department.
2. Insert the CD in a PC on the same wired network and open OptoEMU Sensor Manager.
3. Attach the Sensor to the Ethernet network and apply power.
4. Follow directions to assign the IP address.

3 Configure

1. Follow steps in OptoEMU Sensor Manager to configure energy inputs and signal relay outputs.
2. Follow steps to configure online energy monitoring service.

See the user's guide for details.

4 Analyze & use data

1. Access your online energy monitoring account.
2. Watch for energy spikes and periods of high or unexpected energy use; determine causes.
3. Find out about demand response (DR) programs in your area. For specifics, see the white paper, *Energy Monitoring for Profit: Introducing Demand Response*.
4. Respond to DR events manually or automatically.